

LOVE VINTAGE



LOVE VINTAGE

FIND YOUR FABULOUS IN THE LOVE VINTAGE COLLECTION

From iconic retro through to gorgeous floral, pre-loved and re-discovered, vintage means something different to so many, but through it all there is a sense of excitement, a joy in things past and a tentative anticipation of things future. Two worlds of the past and present combine in one glorious celebration of vibrancy, colour, pattern and texture.

With the new LOVE VINTAGE carpet collection, you can now enjoy the perfect floor to express your love for this highly personal take on a beautiful interior. With stripes for that 60s retro vibe, to tonal florals and faded aged effects, LOVE VINTAGE is eminently flexible and entirely perfect at bringing your own unique sense of style to the floor. In four colour worlds of Red, Blue, Grey and Beige, the collection makes it easy to discover a carpet that fits perfectly with your home, each of the 16 designs as beautiful as their names suggest. Whether Alethea, Seraphina or Celestia to name just three, vintage vibes can be felt through every resilient and hard-wearing polyamide fibre, great for use right throughout the home.

Modern surroundings highlighted by retro accents, or classic interiors revelling in vintage overtones; this is a collection perfect for all wanting an expressive and characterful take on wall-to-wall carpet. Carefully considered and with an almost magical ability to work with your style, LOVE VINTAGE will make you fall in love with carpet all over again.



- 2 ALETHEA
- 4 CELESTIA
- 6 CORALIA
- 8 LOUVINIA
- 10 LUDMILLA
- 12 SERAPHINA

ALETHEA

⇔ CA. 196 X ⇕ CA. 295 CM



32



79



14



43





CELESTIA

⇔ CA. 196 X ⇕ CA. 190 CM



15



CORALIA

↔ CA. 98 X ↕ CA. 95 CM



73





LOUVINIA

⇔ CA. 98 X ⇕ CA. 95 CM



34



73

LUDMILLA

⇄ CA. 50 CM



15



92



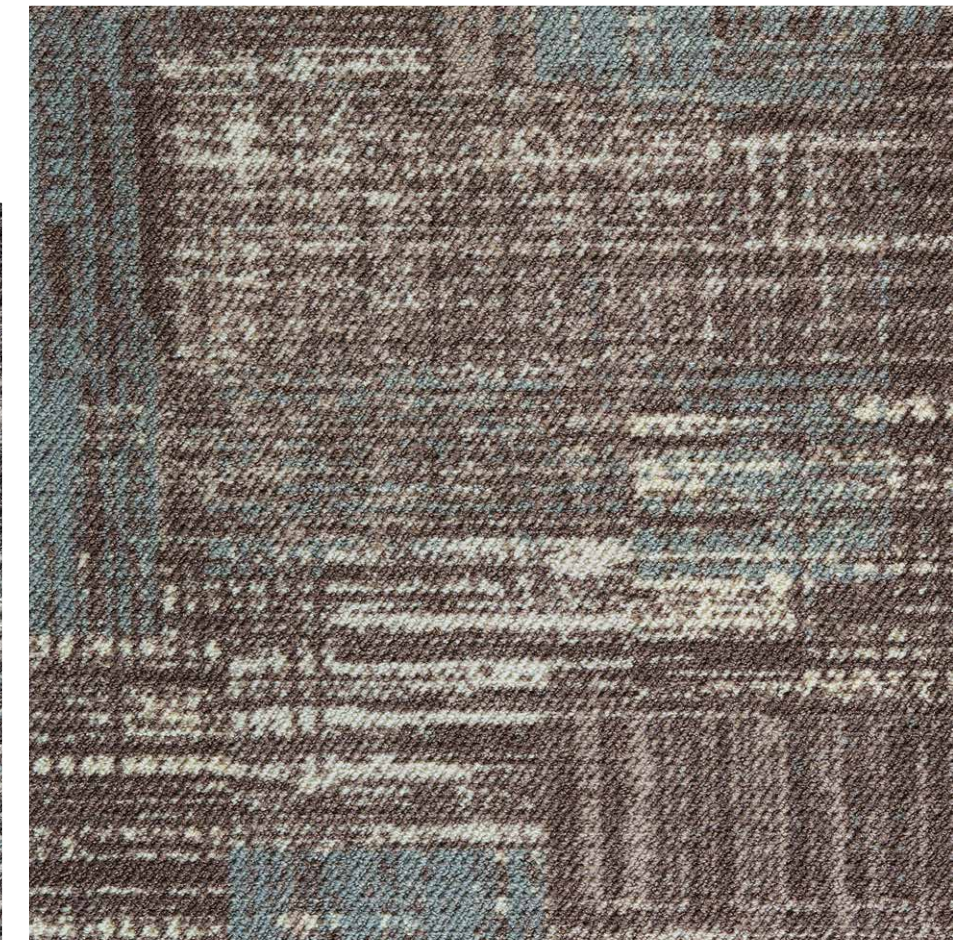
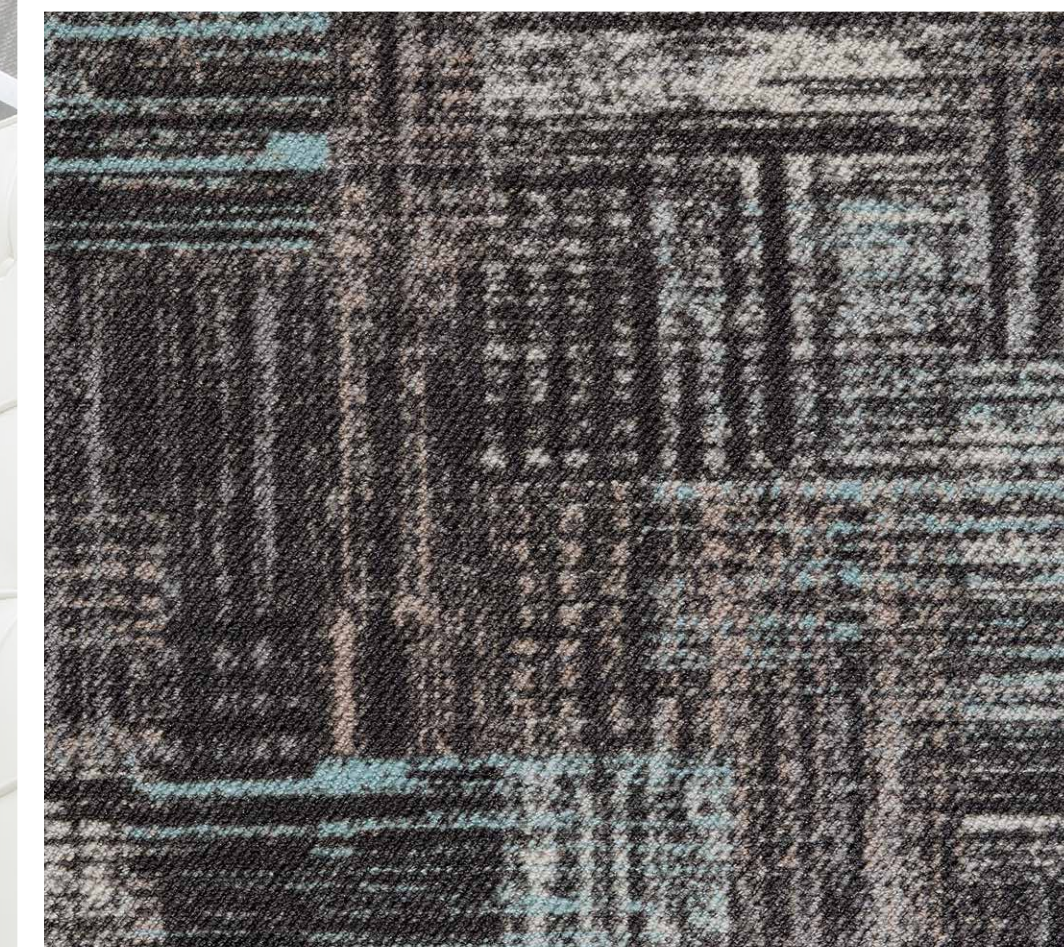
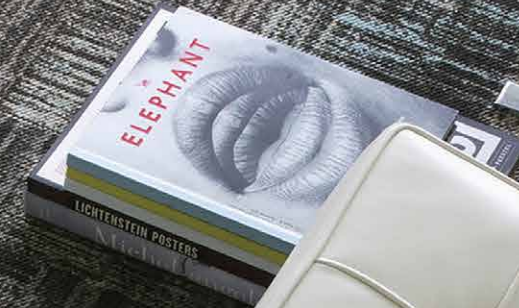
73





SERAPHINA

↔ CA. 196 X ↕ CA. 190 CM



43

92

LOVE VINTAGE

LOVE DECORATION

No other floor covering offers as many colours, structures and aspects. A wide selection that helps to transform any interior decoration.

LOVE COMFORT

Carpet is by far the most comfortable floor covering. It offers a beautiful, soft surface and keeps your feet warm.

LOVE ENERGY SAVING

Carpet helps to reduce heating costs by up to 12%. It isolates against colder areas and helps you to maintain a stable room temperature. Heating costs represent more than 50% of all energy costs spent per private household. Cutting heating costs can increase your savings considerably. Choose wall-to-wall carpet and achieve best savings now!

LOVE SILENCE

Carpet is the best sound insulator of all floor coverings. It absorbs 10 times more noise transmitted by air than any other hard flooring does. Carpet absorbs sound that resonates from furniture, walls, interior decoration.

LOVE VINTAGE

LOVE HEALTH

Carpet traps particles (dust, pollen, and other allergenic substances) in its fibres, there-by keeping them out of the breathing zone until the carpet's "trapping" qualities are refreshed by efficient vacuuming. On a hard surface (ceramic, hardwood, vinyl, etc.), these particles are constantly swirled up to find themselves in the breathing zone. A study commissioned by the DAAB (the German Allergy and Asthma Society) shows that using smooth flooring markedly increases the risk of finding an increased fine dust load in indoor rooms, while using "fitted" (wall-to-wall) carpets minimizes this risk. Moreover, our products have obtained the label 'suitable for allergics' by the German TÜV-institute, certifying that it consist of allergen-tested material.

LOVE GUT - FOR A BETTER ENVIRONMENT

All products of this collection are tested on any harmful substances or emissions. They are certified with the GUT label as being in compliance with environmental standards and regulations.



LOVE VINTAGE

TECHNICAL DATA

Construction:	1/10" structured loop pile
Composition:	100% polyamide IMPREL®
Backing:	Action back
Pile height:	ca. 5mm
Total height:	ca. 7mm
Pile weight:	ca. 640 g/m²





LOVE VINTAGE

ITC | Kanegemstraat 15 | 8700 Tielt | Belgium
Tel.: +32 51 42 44 11 | Fax: +32 51 42 44 85
itc@baltagroup.com | www.baltagroup.com